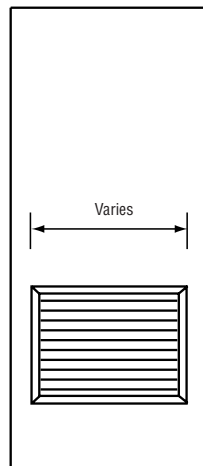
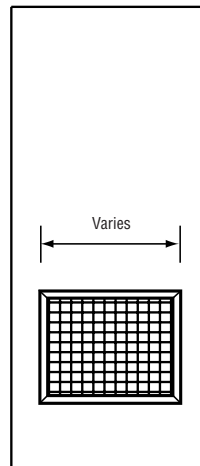


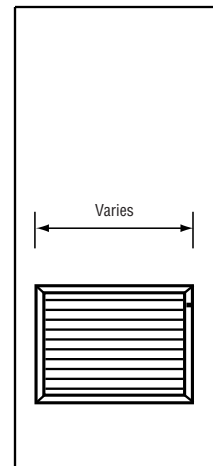
Stamped



Inserted



Grilles



Fusible Link

LOUVERS:

Steelcraft doors can be specified and supplied with various louver options depending on the architectural and applications needs.

Louvers are used in doors to permit the movement of air from one area of the building to another. The amount of air movement through the louver is determined by the requirements of the specific area within the building, and is normally specified in the architectural specifications.

Accommodating the required air flow through the louvered door can be achieved in one of two ways:

Free Air Space – This is a measurement of the free air allowed to pass through the louver. Free Air Space is a function of the louver design used.

Louver Size – Steelcraft does offer standard louver sizes in all of the louver series. If the appropriate amount of air passage through the louver does not meet the ventilation requirements, special sized louvers are available as an option.

DOOR (LOUVER) DESIGNS:

Steelcraft has available four (4) different standard types of louvers for installation in doors. Types available are described on the following pages.

Louvers are not recommended for exterior applications.

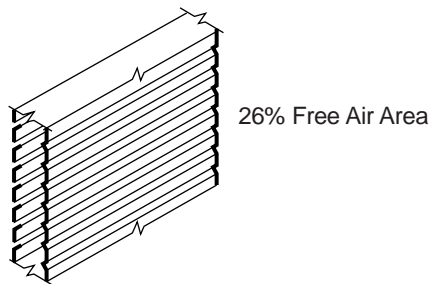
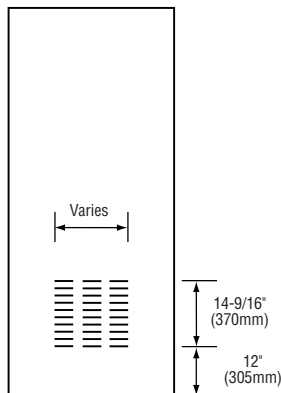
Details are subject to change without prior notice.

STAMPED LOUVER (L-100 series louvers):

These louvers are stamped into the steel face sheet prior to door assembly. The stamped louver consists of three vertical rows of lances all of equal width and height. Stamped louvers are available in L20, L18, and L16-Series non-labeled doors.

Free air space is 26% of louver area.

14" (356mm) wide for doors 2'4" (711mm) and wider
9" (229mm) wide for doors under 2'4" (711mm)



INSERTED LOUVER (L-200 series louvers):

Inserted louvers are 1" (25mm) thick, inverted "Y" blade type, and are inserted into an opening prepared in the door faces. The blades of the louver are made from 18 gage steel and welded to a fabricated sub-frame. The louver is held in place by a retaining frame (shroud), which is supplied with the louver.

Inserted louvers are available in L, B, S and A -Series doors.

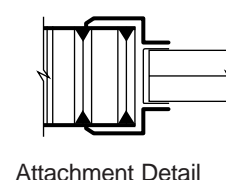
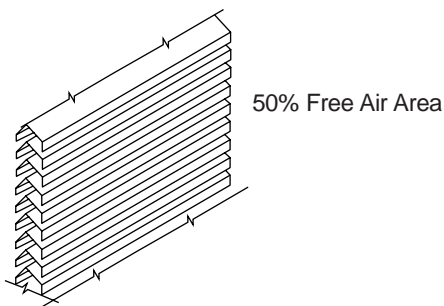
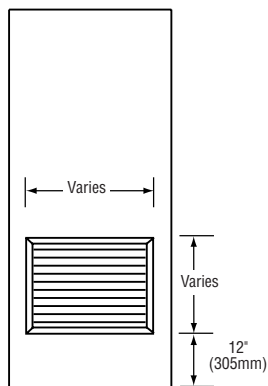
Free air space is 50% of louver area.

For L and B-Series Doors

| | | |
|-------|-----------|-----------------|
| L-214 | 12" x 14" | (305mm x 356mm) |
| L-216 | 18" x 14" | (457mm x 356mm) |
| L-218 | 24" x 14" | (610mm x 356mm) |
| L-219 | 24" x 24" | (610mm x 610mm) |

For A-Series Doors

| | | |
|-------|---|------------------|
| A-264 | 25 ¹ / ₈ " x 66 ³ / ₈ " | (638mm x 1686mm) |
| A-265 | 25 ¹ / ₈ " x 70 ³ / ₈ " | (638mm x 1788mm) |



FUSIBLE LINK LOUVER (L-500 series louvers):

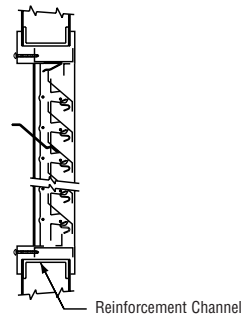
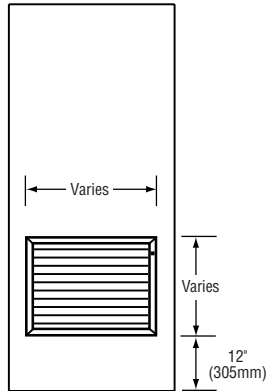
When required, louvers can be used in labeled fire doors, and are 1" (25mm) thick, steel "Z" blade type, containing a fusible link that will break at a prescribed temperature, releasing a closing mechanism. These louvers must be tested and listed for use in fire door applications. Refer to the Fire Rated section of this manual.

Listed fusible link louvers are available in L and B-Series doors.

Free air space is 30% of louver area.

For L and B-Series Doors

| | | |
|-------|-----------|-----------------|
| L-514 | 12" x 14" | (305mm x 356mm) |
| L-515 | 12" x 24" | (305mm x 610mm) |
| L-516 | 18" x 14" | (457mm x 356mm) |
| L-517 | 18" x 24" | (457mm x 610mm) |
| L-518 | 24" x 14" | (610mm x 356mm) |
| L-519 | 24" x 24" | (610mm x 610mm) |



30% Free Air Area