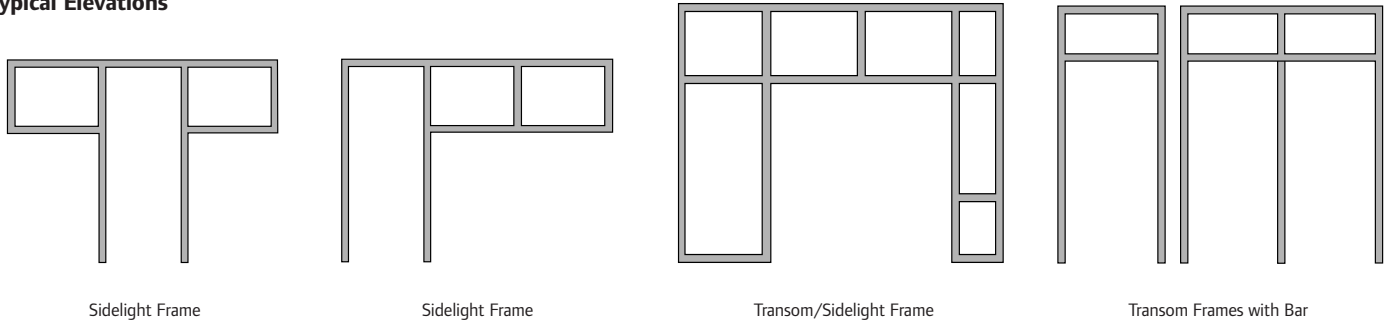


**TRANSOM AND SIDELIGHT FRAMES:**

**Typical Elevations**



**FIRE RATED TRANSOM AND SIDELIGHTS:**

The transom and sidelight frames covered in this section, have been tested in accordance with UL 10C, NFPA 252 - 1999 and listed by either Underwriters Laboratories (UL), Warnock Hersey (ITS/WHI) and FM Global (FM). The ratings and sizes available are shown on the following pages.

Labeled transom and sidelight frames are welded prior to arriving at the jobsite and are available in the following configurations:

- **Transom Light frame** – A frame assembly which includes a fixed horizontal transom bar, and a light (window) directly above the door.
 

The transom bar separates the door opening from the transom light. The door opening can be for:

  - Single door latching into end jamb or window/panel mullion
  - Two single doors with a center mullion
    - Rim FEH latching into hardware manufacturer’s mullion
    - Lock/latch sets latching into hollow metal mullion
  - Double (pair) door without a mullion & swinging in same direction
- **Sidelight frame** – A frame assembly which includes both a fixed vertical mullion bar, and a light (window) adjacent to one or both sides of the door.
 

The mullion bar separates the door opening from the side light. The door opening can be for:

  - Single door latching into end jamb or window/panel mullion
  - Two single doors with a center mullion
    - Rim FEH latching into hardware manufacturer’s mullion
    - Lock/latch sets latching into hollow metal mullion
  - Double (pair) door without a mullion & swinging in same direction
- **Transom and Sidelight frame** – A frame assembly which includes a fixed horizontal transom bar, and a light directly above the door, and a fixed vertical mullion bar, and a light adjacent to one or both sides of the door. The door opening can be for:
  - Single door latching into end jamb or window/panel mullion
  - Two single doors with a center mullion
    - Rim FEH latching into hardware manufacturer’s mullion
    - Lock/latch sets latching into hollow metal mullion
  - Double (pair) door without a mullion & swinging in same direction

**APPROVED FRAME SERIES:**

Frames covered in this section are F and MU. Regardless of the frame series being used, all frames must be installed into a fire rated wall.

**SIZE LIMITATIONS:**

Transom and side light frames must be shipped as welded units. Frames may be field spliced. For splicing details, refer to the Elevation Section of this manual. Maximum width, height and ratings shown on the following pages

**LISTING INFORMATION COVERED:**

All listings covered in this section are for reference and assistance in developing overall parameters of approvals. Several variables such as hardware, wall construction and application will affect the fire ratings. Individual manufacturer’s listings will take precedence. All listings shown on this section conform to UL 10C and NFPA 252.

**INSTALLATION:**

Installation of all Steelcraft framing systems shall conform to the published Steelcraft installation instructions, ANSI/SDI A250.11 Recommended Installation Instructions for Steel Frames and ANSI A250.11 and HMMMA 840. All fire rated frames and doors must be installed in accordance with NFPA Pamphlet 80, and/or the local AHJ.

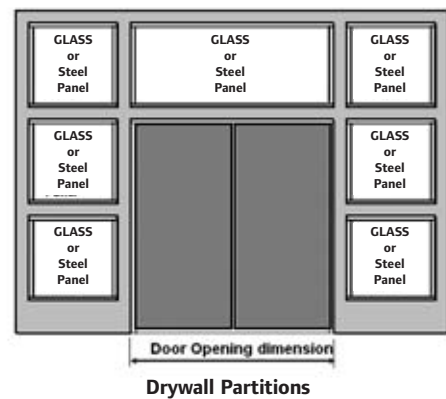
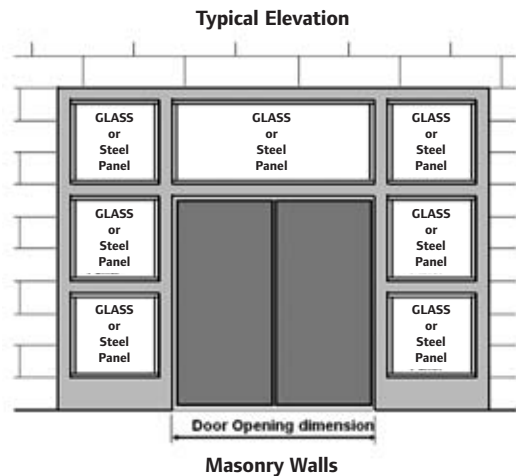
### TRANSOM SIDELIGHT FRAME WITH GLASS AND/OR 1/2" STEELCRAFT LAMINATED STEEL PANELS

Maximum Rating	Wall Application	Frame Information			Listings		
		Series	Jamb Depth		Maximum Overall Frame Width & Height		
			Min.	Max.	UL	ITS/WHI	FM
1-1/2 Hr (90 min) Max	Masonry	F16, F14	3"	14"	13'6" x 12'2"	13'6" x 12'2"	N/A
	Masonry	MU16, MU14	3-1/4"	14"	13'6" x 12'2"	13'6" x 12'2"	N/A
	Stud	F16, F14	3-3/4"	14"	13'2" x 12'2"	13'2" x 12'2"	N/A
	Stud	MU16, MU14	3-3/4"	14"	13'2" x 12'2"	13'2" x 12'2"	N/A

**NOTES:**

- All frames must be shipped as welded units. Frames can be field spliced.
- Door opening:
  - All frames can be prepared for use with a single or double door.
    - Maximum single door size = 4'0" x 10'0".
    - Maximum double door size = Max. 8'0" x 10'0".
  - Double door can be with or without vertical mullion.
  - Frame can have up to two single door openings or one pair door opening.
  - Pair opening doors must swing in same direction.
- Glazing requirements:
  - All glass must be listed glazing material.
  - 1/2" thick laminated panels with mineral board core. Panel sizes are as follows:
    - Transom panels = 48" wide X 38" high
    - Side panels = 38" wide X 48" high
  - Glazing stop/bead requirements:
    - Stop width minimum 7/16" or as required by glazing manufacturer.
    - Stop height minimum 5/8" or as required by glazing manufacturer.
    - Glazing bead minimum 18 gage, or as required by glazing manufacturer.
- Special profile may be necessary due to special thickness of glazing.
- Frame profile variations:
  - Perimeter (Head and Jamb) frame
    - Masonry walls = minimum face 1" (FN)
    - Stud walls = minimum face 1-1/4"
    - Maximum face 4" masonry, steel or wood stud walls.
  - Interior dividing members
    - Members at door opening minimum face 1".
    - Vertical maximum face 4-1/2"
    - Horizontal maximum 8".
  - Sill section Minimum Face 2", maximum 16-1/8"
- The use and installation of frames with 1-1/2 hour (90 minute) ratings are subject to the approval of the local AHJ. These assemblies are tested and listed in accordance with UL10C and NFPA 252. Fire-protection-rated glazing materials must be installed in these assemblies. These assemblies are not tested in accordance with ASTM E119 or UL 263 (Fire Tests of Building Construction and Materials) and use of Fire-resistance-rated glazing materials will not make the frame compliant with ASTM E119 or UL 263.

Transom Frame / Sidelite Frame assemblies are tested and listed for fire protection in accordance with UL10C and NFPA 252. Where fire protection ratings are required, fire protection rated glazing shall be installed. The installation of fire resistance rated glazing does not qualify these assemblies for compliance with ASTM E119 or UL 263. The use and installation of transom sidelite frames are subject to approval of the AHJ.



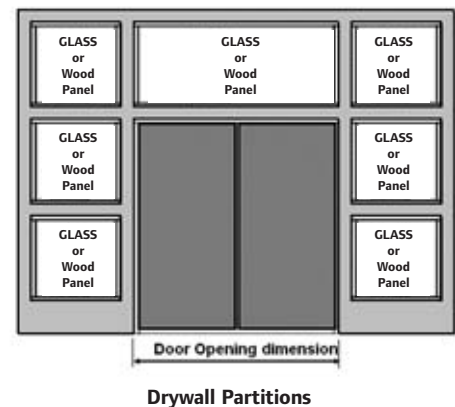
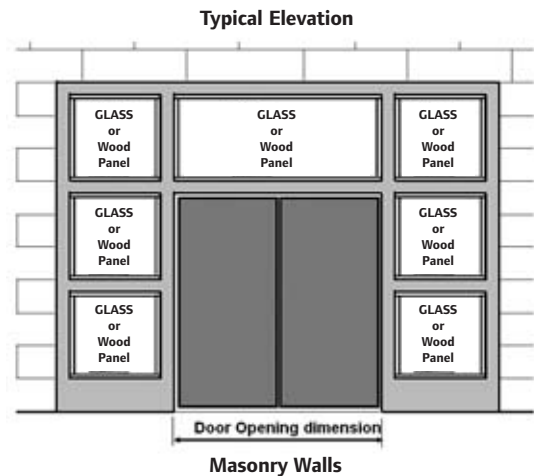
**TRANSOM SIDELIGHT FRAME WITH GLASS AND/OR 1-3/4" RATED WOOD PANELS**

Maximum Rating	Wall Application	Frame Information			Listings		
		Series	Jamb Depth		Maximum Overall Frame Width & Height		
			Min.	Max.	UL	ITS/WHI	FM
1-1/2 Hr (90 min) Max	Masonry	F16, F14	4-3/4"	12-3/4"	13'6" x 12'2"	13'6" x 12'2"	N/A
	Masonry	MU16, MU14	4-3/4"	12-3/4"	13'6" x 12'2"	13'6" x 12'2"	N/A
	Stud	F16, F14	4-3/4"	12-3/4"	13'2" x 12'2"	13'2" x 12'2"	N/A
	Stud	MU16, MU14	4-3/4"	12-3/4"	13'2" x 12'2"	13'2" x 12'2"	N/A

**NOTES:**

- All frames must be shipped as welded units. Frames can be field spliced.
- Door opening:
  - All frames can be prepared for use with a single or double door.
    - Maximum single door size = 4'0" x 10'0".
    - Maximum double door size = Max. 8'0" x 10'0".
  - Double door can be with or without vertical mullion.
  - Frame can have up to two single door openings or one pair door opening.
  - Pair opening doors must swing in same direction.
- Wood doors and panels:
  - Maximum width, height, and rating based on wood door manufacturer's listing.
- Glazing requirements:
  - All glass must be listed glazing material.
  - Glazing stop/bead requirements:
    - Stop width minimum 7/16" or as required by glazing manufacturer.
    - Stop height minimum 5/8" or as required by glazing manufacturer.
    - Glazing bead minimum 18 gage, or as required by glazing manufacturer.
- Special profile may be necessary due to special thickness of glazing.
- Frame profile variations:
  - Perimeter (Head and Jambs) frame.
    - Masonry walls = minimum face 1" (FN).
    - Stud walls = minimum face 1-1/4".
    - Maximum face 4" masonry, steel or wood stud walls.
  - Interior dividing members .
    - Members at door opening minimum face 1".
    - Vertical maximum face 4-1/2".
    - Horizontal maximum 8".
  - Sill section Minimum face 2", maximum 16-1/8".
- Wood panels can be used in conjunction with metal panels or glass.
- Maximum jamb depth:
  - 14" if any glass is installed.
  - 12-3/4" if all wood panels.
- The use and installation of frames with 1-1/2 hour (90 minute) ratings are subject to the approval of the local AHJ. These assemblies are tested and listed in accordance with UL10C and NFPA 252. Fire-protection-rated glazing materials must be installed in these assemblies. These assemblies are not tested in accordance with ASTM E119 or UL 263 (Fire Tests of Building Construction and Materials) and use of Fire-resistance-rated glazing materials will not make the frame compliant with ASTM E119 or UL 263.

Transom Frame / Sidelite Frame assemblies are tested and listed for fire protection in accordance with UL10C and NFPA 252. Where fire protection ratings are required, fire protection rated glazing shall be installed. The installation of fire resistance rated glazing does not qualify these assemblies for compliance with ASTM E119 or UL 263. The use and installation of transom sidelite frames are subject to approval of the AHJ.



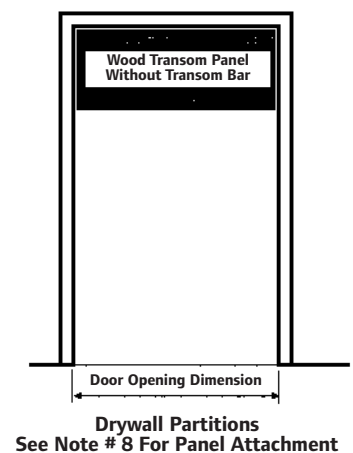
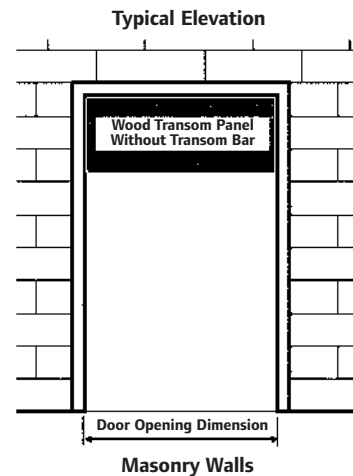
### TRANSOM FRAME WITHOUT TRANSOM BAR (1-3/4" wood panel installations)

NOTE - Listed for Neutral Pressure - Wood door manufacturers may have positive pressure listings

Maximum Rating	Wall Application	Frame Information			Listings		
		Series	Jamb Depth		Maximum Door and Panel Opening Width & Height		
			Min.	Max.	UL	ITS/WHI	FM
1-1/2 Hr (90 min) Max	Masonry	F16, F14	4-3/4"	12-3/4"	4'0" x 11'0"	4'0" x 11'0"	N/A
	Masonry	FN16, FN14	4-3/4"	12-3/4"	4'0" x 11'0"	4'0" x 11'0"	N/A
	Masonry	MU16, MU14	4-3/4"	12-3/4"	4'0" x 11'0"	4'0" x 11'0"	N/A
	Stud	F16, F14	4-3/4"	12-3/4"	4'0" x 11'0"	4'0" x 11'0"	N/A
	Stud	MU16, MU14	4-3/4"	12-3/4"	4'0" x 11'0"	4'0" x 11'0"	N/A

**NOTES:**

1. Sizes may vary based on wood door manufacturer's listings.
2. 'F' series frames can be knocked down(KD)
3. 'MU' series must be shipped as welded units.
4. Maximum door size:
  - Single doors = see wood door manufacturer's listing.
  - Double doors = not approved
5. Panel requirements:
  - 1-3/4 thick wood panel.
  - Maximum panel size = 4' 0" wide x 4' 0" high.
  - Wood panel installed with spring bolts requires reinforcing or frame preparations.
6. Frame profile variations
  - Perimeter (Head and Jambs) frame
  - Masonry walls = minimum face 1" (FN)
  - Stud walls = minimum face 1-1/4"
  - Maximum face 4" masonry, steel or wood stud walls.
7. Hardware applications:
  - Single door - follow standard label requirements.
8. Refer to wood panel manufacturer's listing for spring bolt attachment into the frame.



**TRANSOM FRAME WITHOUT TRANSOM BAR (1-3/4" Steelcraft Steel panel installed)**

NOTE - Listed for Neutral Pressure

Maximum Rating	Wall Application	Frame Information			Listings – Maximum Door and Panel Opening Width and Height		
		Series	Jamb Depth		UL & ITS/WHI		FM
			Min.	Max.	Single Doors	Double Doors	
<b>3 Hr Max</b>	Masonry	F16, F14	4-3/4"	12-3/4"	4'0" x 11'2"	8'0" x 11'2"	N/A
	Masonry	FN16, FN14	4-3/4"	12-3/4"	4'0" x 11'2"	8'0" x 11'2"	N/A
	Masonry	MU16, MU14	4-3/4"	12-3/4"	4'0" x 11'2"	8'0" x 11'2"	N/A
<b>1-1/2 Hr (90 min) Max</b>	Stud	F16, F14	4-3/4"	12-3/4"	4'0" x 10'0"	8'0" x 10'0"	N/A
	Stud	MU16, MU14	4-3/4"	12-3/4"	4'0" x 10'0"	8'0" x 10'0"	N/A

NOTES:

- 'F' series frames can be knocked down(KD)
- 'MU' series must be shipped as welded units.
- Maximum door size:
  - Single doors = 4080
  - Double doors = 8080 must swing in same direction
- Panel requirements:
  - 1-3/4 thick steel panel
  - Maximum panel size:
    - Single doors = 48" wide X 48" high
    - Double doors = 96" wide X 48" high
- Frame profile variations
  - Perimeter (Head and Jambs) frame
  - Masonry walls = minimum face 1" (FN)
  - Stud walls = minimum face 1-1/4"
  - Maximum face 4" masonry, steel or wood stud walls.
- Hardware applications:
  - Single door - follow standard label requirements.
  - Double doors – limited to flush bolts x single point latch or Mortise FEH.

